

Intuos Airbrush Tips

The Wacom Intuos Airbrush is a unique input solution that provides many of the same capabilities as a real airbrush when used in conjunction with recent version of Adobe Photoshop, Painter by Corel and other applications that support the tool.

The Airbrush allows you to adjust pressure, tilt angle and bearing, and ink flow control. The fingerwheel can also be used to control brush size independent of opacity. This is a very handy feature when working with tools in Photoshop and Painter.

Hold the Airbrush with your thumb and middle finger. The fingerwheel should be in a convenient location for you to roll it with your index finger. Tilt the Airbrush to find a comfortable position that allows you to paint and draw with pressure-sensitivity.

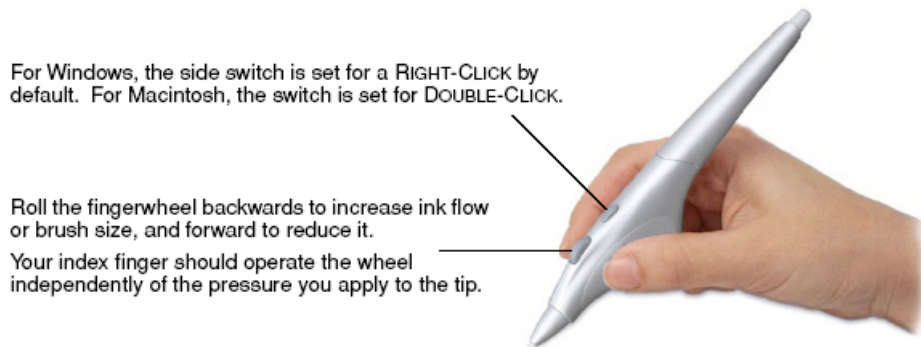


Figure 1. Holding the Intuos Airbrush

When you touch the airbrush to the tablet for the first time, the Wacom Tablet Control Panel will automatically detect the tool.

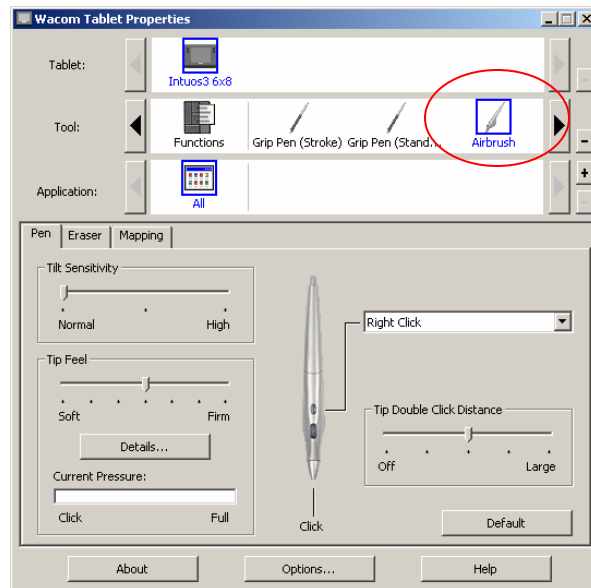


Figure 2. Tablet Control Panel (Windows)

Note that you can change the assignment of the pen, eraser, and mapping by clicking on the corresponding tab. The fingerwheel has a set range and stays in any given position until changed. This allows you to use the fingerwheel to adjust brush size while using the pressure-sensitive tip to control opacity or ink flow, as an example.

You can assign the Stylus Wheel settings in Photoshop by clicking on the Brushes tab. The wheel can be used to control shape dynamics, scattering, color dynamics, flow (see Figure 3.), or opacity. Experiment with the different settings and determine what works best for you.

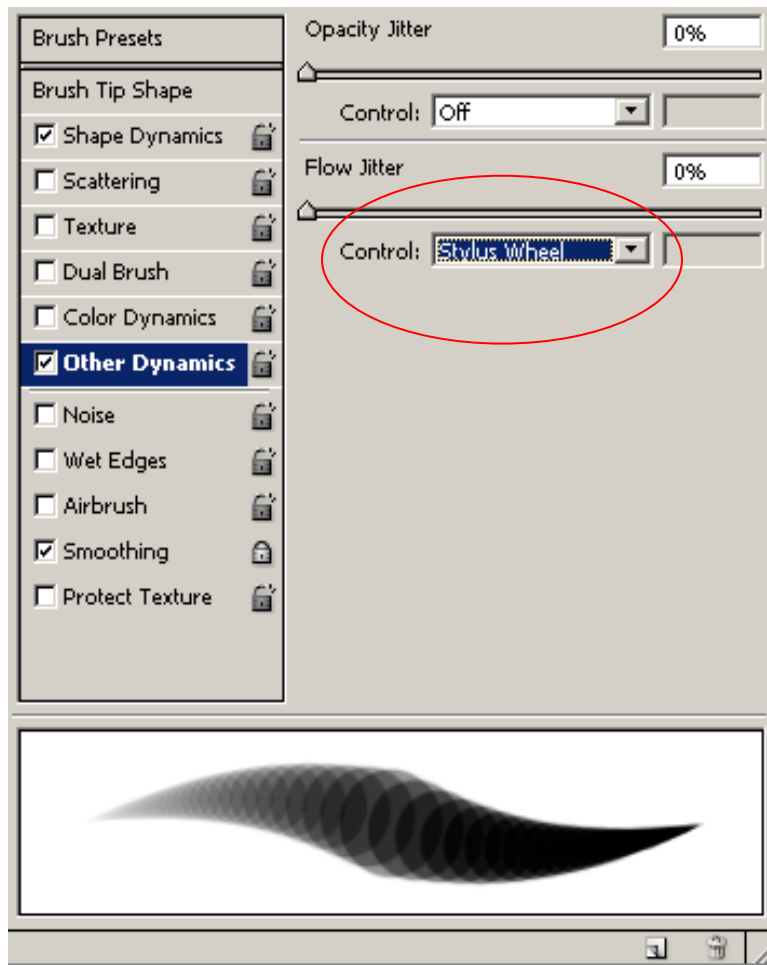


Figure 3. Brushes Tab in Photoshop

Corel's Painter allows you to control many aspects of the various brushes with the Airbrush setting. As an example, the wheel can be used to control the size of the size of the brush while the tip's pressure sensitivity can be used to vary the opacity.

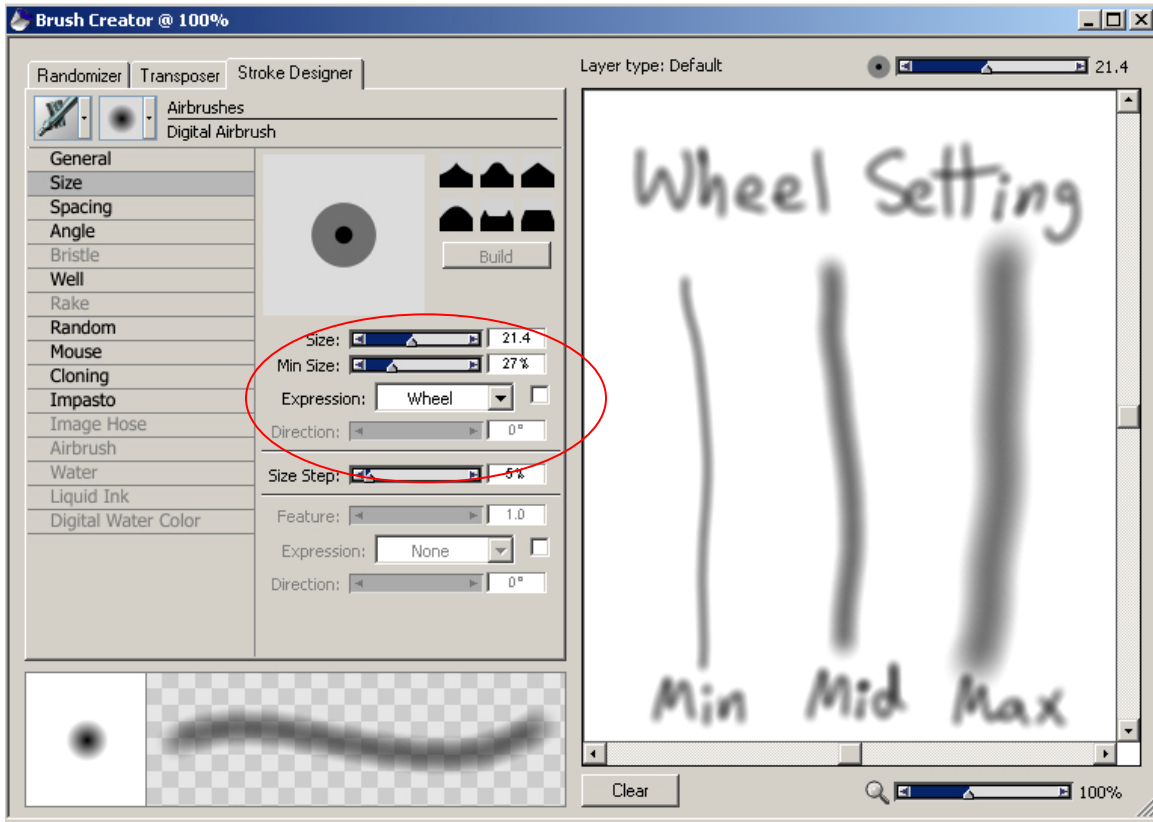


Figure 4 Painter Brush Creator

Please see the Intuos User's Manual for additional information on the Airbrush settings.