

Selectively Apply Filters and Special Effects



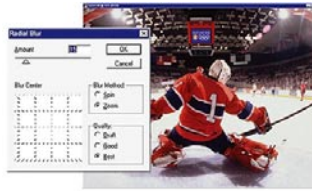
Step 1

Once your image has been cropped or color corrected, take a quick snapshot of the current image by clicking on the “New Image Snapshot” icon, located at the bottom of the History palette.



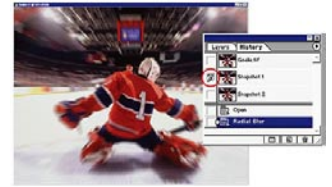
Step 2

Next, run a radial blur on the image. You can shift the focal point of the blur by clicking and dragging inside the “Blur Center” box, so that it perfectly matches your image.



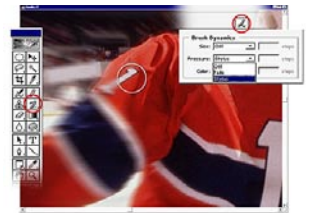
Step 4

Now, grab the History Brush, check Brush Dynamics to make sure that Opacity is set to Stylus, and paint back in the areas you want to “un-blur”. Press harder for more distinct changes, softer for more gradual changes...



Step 3

Take one more snapshot of the image. Click on the box just left of “Snapshot 1”--that’s the History state you’re painting from. (Click on “Snapshot 2” if you need to paint back in from the “blurred” state).



Step 5 Nice save!

